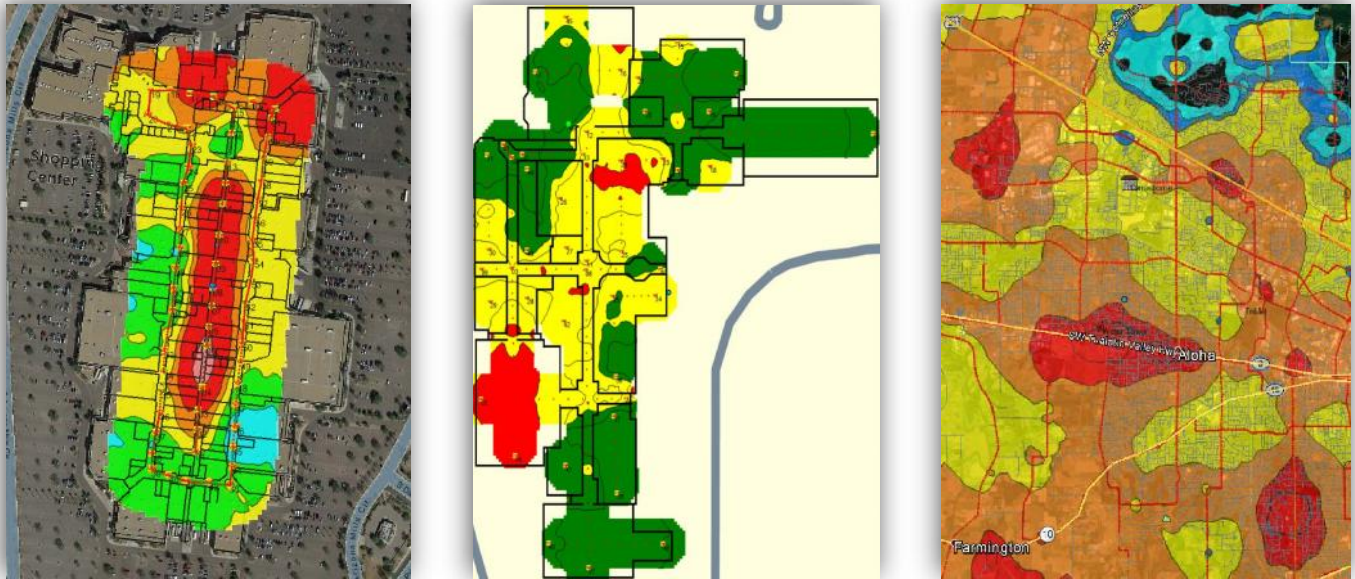


Verify LTE & LMR Coverage



Eliminate the Guesswork

Survey Technologies coverage testing solutions utilize LTE and LMR test radios for coverage and performance measurements of LTE and P-25 wireless systems. Leveraging the test handset's selectivity and sensitivity allows STI's Field Test 7 to accurately measure signal parameters, even in very difficult RF environments during drive tests or in buildings.

STI Field Test 7 will:

- measure LTE (RSRP, RSRQ, RSSI, and SINR) and P-25 (RSSI and BER) at the same time
- analyze measurements
- display coverage as colored contour plots
- produce outputs showing measurement locations and results on satellite maps
- create tile or grid analytics meeting fire code requirements



If you are responsible for management of a critical communication system, Survey Technologies can help you verify and document wireless coverage and performance, eliminating the guesswork.

STI Field Test 7, with LTE handsets and P-25 test mobiles or portables, are available from Survey Technologies. Contact us with your requirements today.